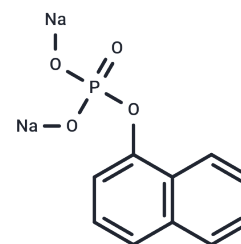


## 1-Naphthyl phosphate disodium salt

### Chemical Properties

CAS No. :	2183-17-7
Formula:	C <sub>10</sub> H <sub>7</sub> Na <sub>2</sub> O <sub>4</sub> P
Molecular Weight:	268.11
Storage:	Powder: -20°C for 3 years   In solvent: -80°C for 1 year <small>Actual storage temperature shall be subject to the COA.</small>



### Biological Description

Description	1-Naphthyl phosphate disodium salt, 98% (α-Naphthyl phosphate disodium salt, 98%), is utilized as a histochemical substrate for both acid and alkaline phosphatases and serves as a substrate for the determination of prostatic acid phosphatase.
Targets(IC50)	Others

### Preparing Stock Solutions

	1mg	5mg	10mg
1 mM	3.7298 mL	18.6491 mL	37.2981 mL
5 mM	0.746 mL	3.7298 mL	7.4596 mL
10 mM	0.373 mL	1.8649 mL	3.7298 mL
50 mM	0.0746 mL	0.373 mL	0.746 mL

Please select the appropriate solvent to prepare the stock solution, according to the solubility of the product in different solvents. Please use it as soon as possible.

Note: The dilution table applies only to solid products. For liquid products, please calculate the stock solution based on the stated concentration and/or density.

**Inhibitor · Natural Compounds · Compound Libraries · Recombinant Proteins**

This product is for Research Use Only · Not for Human or Veterinary or Therapeutic Use

Tel: 781-999-4286 E\_mail: info@targetmol.com Address: 34 Washington Street, Wellesley Hills, MA 02481