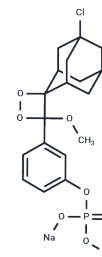


## CSPD substrate

## Chemical Properties

CAS No. :	142849-53-4
Formula:	C <sub>18</sub> H <sub>20</sub> ClNa <sub>2</sub> O <sub>7</sub> P
Molecular Weight:	460.75
Storage:	Powder: -20°C for 3 years   In solvent: -80°C for 1 year Actual storage temperature shall be subject to the COA.



## Biological Description

Description	CSPD substrate is a chemiluminescent substrate for alkaline phosphatase. It offers increased sensitivity for alkaline phosphatase detection and simplifies the assay process.
Targets(IC50)	Others

## Preparing Stock Solutions

	1mg	5mg	10mg
1 mM	2.1704 mL	10.8519 mL	21.7037 mL
5 mM	0.4341 mL	2.1704 mL	4.3407 mL
10 mM	0.217 mL	1.0852 mL	2.1704 mL
50 mM	0.0434 mL	0.217 mL	0.4341 mL

Please select the appropriate solvent to prepare the stock solution, according to the solubility of the product in different solvents. Please use it as soon as possible.

Note: The dilution table applies only to solid products. For liquid products, please calculate the stock solution based on the stated concentration and/or density.

**Inhibitor · Natural Compounds · Compound Libraries · Recombinant Proteins**

This product is for Research Use Only · Not for Human or Veterinary or Therapeutic Use

Tel:781-999-4286 E\_mail:info@targetmol.com Address:34 Washington Street,Wellesley Hills,MA 02481