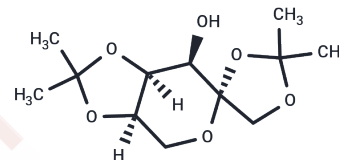


1,2:4,5-Bis-O-(1-methylethylidene)- β -D-psicopyranose

Chemical Properties

| | |
|-------------------|---|
| CAS No. : | 18422-54-3 |
| Formula: | C ₁₂ H ₂₀ O ₆ |
| Molecular Weight: | 260.28 |
| Storage: | Powder: -20°C for 3 years In solvent: -80°C for 1 year Actual storage temperature shall be subject to the COA. |



Biological Description

| | |
|---------------|--|
| Description | 1,2:4,5-Bis-O-(1-methylethylidene)- β -D-psicopyranose is a biochemical reagent utilized in glycobiology research. Glycobiology examines the structure, synthesis, biology, and evolution of sugars. It encompasses carbohydrate chemistry, glycan synthesis and degradation enzymology, protein-glycan interactions, and the roles of glycans in biological systems. This field is closely connected with fundamental research, biomedicine, and biotechnology. |
| Targets(IC50) | Others |

Preparing Stock Solutions

| | 1mg | 5mg | 10mg |
|-------|-----------|------------|------------|
| 1 mM | 3.842 mL | 19.2101 mL | 38.4202 mL |
| 5 mM | 0.7684 mL | 3.842 mL | 7.684 mL |
| 10 mM | 0.3842 mL | 1.921 mL | 3.842 mL |
| 50 mM | 0.0768 mL | 0.3842 mL | 0.7684 mL |

Please select the appropriate solvent to prepare the stock solution, according to the solubility of the product in different solvents. Please use it as soon as possible.

Note: The dilution table applies only to solid products. For liquid products, please calculate the stock solution based on the stated concentration and/or density.

Inhibitor · Natural Compounds · Compound Libraries · Recombinant Proteins

This product is for Research Use Only · Not for Human or Veterinary or Therapeutic Use

Tel:781-999-4286 E_mail:info@targetmol.com Address:34 Washington Street,Wellesley Hills,MA 02481