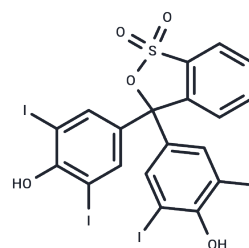


## Iodophenol blue

## Chemical Properties

CAS No. :	4430-24-4
Formula:	C <sub>19</sub> H <sub>10</sub> I <sub>4</sub> O <sub>5</sub> S
Molecular Weight:	857.96
Storage:	Powder: -20°C for 3 years   In solvent: -80°C for 1 year Actual storage temperature shall be subject to the COA.



## Biological Description

Description	Iodophenol blue is a reagent used in biochemical reactions.
Targets(IC50)	Others

## Preparing Stock Solutions

	1mg	5mg	10mg
1 mM	1.1656 mL	5.8278 mL	11.6556 mL
5 mM	0.2331 mL	1.1656 mL	2.3311 mL
10 mM	0.1166 mL	0.5828 mL	1.1656 mL
50 mM	0.0233 mL	0.1166 mL	0.2331 mL

Please select the appropriate solvent to prepare the stock solution, according to the solubility of the product in different solvents. Please use it as soon as possible.

Note: The dilution table applies only to solid products. For liquid products, please calculate the stock solution based on the stated concentration and/or density.

**Inhibitor · Natural Compounds · Compound Libraries · Recombinant Proteins**

This product is for Research Use Only · Not for Human or Veterinary or Therapeutic Use

Tel:781-999-4286 E\_mail:info@targetmol.com Address:34 Washington Street,Wellesley Hills,MA 02481