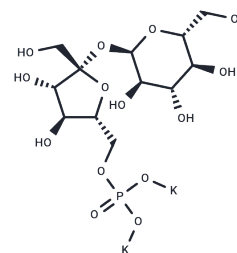


Sucrose 6'-monophosphate dipotassium

Chemical Properties

CAS No. :	36064-19-4
Formula:	C ₁₂ H ₂₁ K ₂ O ₁₄ P
Molecular Weight:	498.46
Storage:	Powder: -20°C for 3 years In solvent: -80°C for 1 year <small>Actual storage temperature shall be subject to the COA.</small>



Biological Description

Description	Sucrose 6'-monophosphate (dipotassium) is a biochemical reagent utilized in glycobiology studies. Glycobiology explores the structure, synthesis, biology, and evolution of sugars. It encompasses carbohydrate chemistry, glycan formation and degradation enzymology, protein-glycan recognition, and the role of glycans in biological systems. This field is closely linked to fundamental research, biomedicine, and biotechnology.
Targets(IC50)	Others

Preparing Stock Solutions

	1mg	5mg	10mg
1 mM	2.0062 mL	10.0309 mL	20.0618 mL
5 mM	0.4012 mL	2.0062 mL	4.0124 mL
10 mM	0.2006 mL	1.0031 mL	2.0062 mL
50 mM	0.0401 mL	0.2006 mL	0.4012 mL

Please select the appropriate solvent to prepare the stock solution, according to the solubility of the product in different solvents. Please use it as soon as possible.

Note: The dilution table applies only to solid products. For liquid products, please calculate the stock solution based on the stated concentration and/or density.

Inhibitor · Natural Compounds · Compound Libraries · Recombinant Proteins

This product is for Research Use Only · Not for Human or Veterinary or Therapeutic Use

Tel:781-999-4286 E_mail:info@targetmol.com Address:34 Washington Street,Wellesley Hills,MA 02481