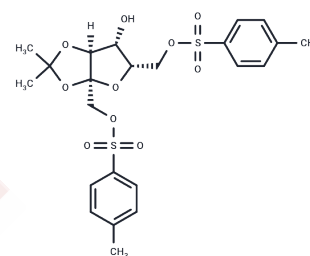


## 2,3-O-Isopropylidene-1,6-ditosyl-L-sorbose

### Chemical Properties

CAS No. :	2484-55-1
Formula:	C <sub>23</sub> H <sub>28</sub> O <sub>10</sub> S <sub>2</sub>
Molecular Weight:	528.59
Storage:	Powder: -20°C for 3 years   In solvent: -80°C for 1 year <i>Actual storage temperature shall be subject to the COA.</i>



### Biological Description

Description	2,3-O-Isopropylidene-1,6-ditosyl-L-sorbose is a biochemical reagent applied in glycochemistry research. Glycochemistry explores the structure, synthesis, biology, and evolution of sugars, involving carbohydrate chemistry, glycan formation and degradation enzymology, protein-glycan interactions, and the role of glycans in biological systems. This field is closely linked to basic research, biomedicine, and biotechnology.
Targets(IC50)	Others

### Preparing Stock Solutions

	1mg	5mg	10mg
1 mM	1.8918 mL	9.4591 mL	18.9183 mL
5 mM	0.3784 mL	1.8918 mL	3.7837 mL
10 mM	0.1892 mL	0.9459 mL	1.8918 mL
50 mM	0.0378 mL	0.1892 mL	0.3784 mL

Please select the appropriate solvent to prepare the stock solution, according to the solubility of the product in different solvents. Please use it as soon as possible.

Note: The dilution table applies only to solid products. For liquid products, please calculate the stock solution based on the stated concentration and/or density.

**Inhibitor · Natural Compounds · Compound Libraries · Recombinant Proteins**

This product is for Research Use Only · Not for Human or Veterinary or Therapeutic Use

Tel:781-999-4286 E\_mail:info@targetmol.com Address:34 Washington Street,Wellesley Hills,MA 02481