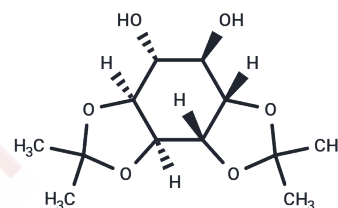


## 1,2:5,6-Di-O-isopropylidene-L-chiro-inositol

### Chemical Properties

CAS No. : 65556-81-2  
 Formula: C<sub>12</sub>H<sub>20</sub>O<sub>6</sub>  
 Molecular Weight: 260.28  
 Storage: Powder: -20°C for 3 years | In solvent: -80°C for 1 year  
*Actual storage temperature shall be subject to the COA.*



### Biological Description

Description	1,2:5,6-Di-O-isopropylidene-L-chiro-inositol is a derivative of inositol.
Targets(IC50)	Others

### Preparing Stock Solutions

	1mg	5mg	10mg
1 mM	3.842 mL	19.2101 mL	38.4202 mL
5 mM	0.7684 mL	3.842 mL	7.684 mL
10 mM	0.3842 mL	1.921 mL	3.842 mL
50 mM	0.0768 mL	0.3842 mL	0.7684 mL

Please select the appropriate solvent to prepare the stock solution, according to the solubility of the product in different solvents. Please use it as soon as possible.

Note: The dilution table applies only to solid products. For liquid products, please calculate the stock solution based on the stated concentration and/or density.

**Inhibitor · Natural Compounds · Compound Libraries · Recombinant Proteins**

This product is for Research Use Only · Not for Human or Veterinary or Therapeutic Use

Tel:781-999-4286 E\_mail:info@targetmol.com Address:34 Washington Street,Wellesley Hills,MA 02481