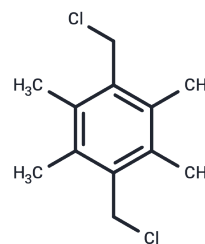


3,6-Bis(chloromethyl)durene

Chemical Properties

CAS No. :	3022-16-0
Formula:	C ₁₂ H ₁₆ Cl ₂
Molecular Weight:	231.16
Storage:	Powder: -20°C for 3 years In solvent: -80°C for 1 year Actual storage temperature shall be subject to the COA.



Biological Description

Description	3,6-Bis(chloromethyl)durene is a reagent used in biochemical reactions.
-------------	---

Preparing Stock Solutions

	1mg	5mg	10mg
1 mM	4.326 mL	21.630 mL	43.2601 mL
5 mM	0.8652 mL	4.326 mL	8.652 mL
10 mM	0.4326 mL	2.163 mL	4.326 mL
50 mM	0.0865 mL	0.4326 mL	0.8652 mL

Please select the appropriate solvent to prepare the stock solution, according to the solubility of the product in different solvents. Please use it as soon as possible.

Note: The dilution table applies only to solid products. For liquid products, please calculate the stock solution based on the stated concentration and/or density.

Inhibitor · Natural Compounds · Compound Libraries · Recombinant Proteins

This product is for Research Use Only · Not for Human or Veterinary or Therapeutic Use

Tel:781-999-4286 E_mail:info@targetmol.com Address:34 Washington Street,Wellesley Hills,MA 02481