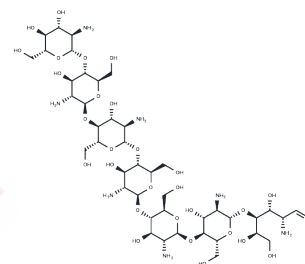


Chitoheptaose

Chemical Properties

CAS No. :	68232-35-9
Formula:	C42H79N7O29
Molecular Weight:	1146.11
Storage:	Store under nitrogen Powder: -20°C for 3 years In solvent: -80°C for 1 year <small>Actual storage temperature shall be subject to the COA.</small>



Biological Description

Description	Chitoheptaose is a type of chitohexose, extracted from the exoskeletons of crustacean animals such as crabs, shrimp, and lobsters. Chitoheptaose possesses antioxidant, anti-inflammatory, and anti-apoptotic properties and is commonly used in studies on myocarditis, demonstrating cardioprotective effects. It stands out in improving cardiac parameters (left ventricular internal dimensions, end-systolic and end-diastolic, ejection fraction, and shortening fraction) and inhibiting inflammatory cytokines (IL-1 β).
-------------	--

Preparing Stock Solutions

	1mg	5mg	10mg
1 mM	0.8725 mL	4.3626 mL	8.7252 mL
5 mM	0.1745 mL	0.8725 mL	1.745 mL
10 mM	0.0873 mL	0.4363 mL	0.8725 mL
50 mM	0.0175 mL	0.0873 mL	0.1745 mL

Please select the appropriate solvent to prepare the stock solution, according to the solubility of the product in different solvents. Please use it as soon as possible.

Note: The dilution table applies only to solid products. For liquid products, please calculate the stock solution based on the stated concentration and/or density.

Inhibitor · Natural Compounds · Compound Libraries · Recombinant Proteins

This product is for Research Use Only · Not for Human or Veterinary or Therapeutic Use

Tel:781-999-4286 E_mail:info@targetmol.com Address:34 Washington Street,Wellesley Hills,MA 02481