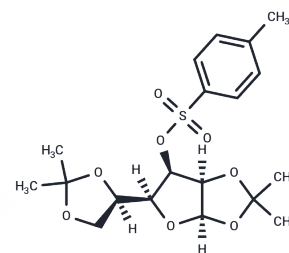


1,2:5,6-Di-O-isopropylidene-3-O-tosyl- α -D-gulofuranose

Chemical Properties

CAS No. :	19131-06-7
Formula:	C ₁₉ H ₂₆ O ₈ S
Molecular Weight:	414.47
Storage:	Powder: -20°C for 3 years In solvent: -80°C for 1 year <small>Actual storage temperature shall be subject to the COA.</small>



Biological Description

Description	1,2:5,6-Di-O-isopropylidene-3-O-tosyl- α -D-gulofuranose is a biochemical reagent widely used in glycobiology research. Glycobiology focuses on the study of carbohydrates, including their structure, synthesis, biology, and evolution. This research includes carbohydrate chemistry, glycan formation and degradation enzymology, protein-glycan interactions, and the roles of glycans in biological systems. The field is closely linked with fundamental research, as well as biomedical and biotechnological applications.
Targets(IC50)	Others

Preparing Stock Solutions

	1mg	5mg	10mg
1 mM	2.4127 mL	12.0636 mL	24.1272 mL
5 mM	0.4825 mL	2.4127 mL	4.8254 mL
10 mM	0.2413 mL	1.2064 mL	2.4127 mL
50 mM	0.0483 mL	0.2413 mL	0.4825 mL

Please select the appropriate solvent to prepare the stock solution, according to the solubility of the product in different solvents. Please use it as soon as possible.

Note: The dilution table applies only to solid products. For liquid products, please calculate the stock solution based on the stated concentration and/or density.

Inhibitor · Natural Compounds · Compound Libraries · Recombinant Proteins

This product is for Research Use Only · Not for Human or Veterinary or Therapeutic Use

Tel:781-999-4286 E_mail:info@targetmol.com Address:34 Washington Street,Wellesley Hills,MA 02481