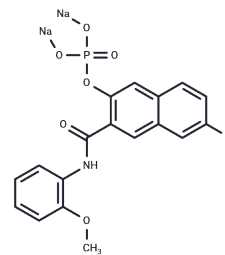


Naphthol AS-BI phosphate sodium

Chemical Properties

CAS No. : 530-79-0
 Formula: C₁₈H₁₃BrNNa₂O₆P
 Molecular Weight: 496.16
 Storage: Powder: -20°C for 3 years | In solvent: -80°C for 1 year
 Actual storage temperature shall be subject to the COA.



Biological Description

Description	Naphthol AS-BI phosphate sodium is a reagent used in biochemical reactions.
Targets(IC50)	Others

Preparing Stock Solutions

	1mg	5mg	10mg
1 mM	2.0155 mL	10.0774 mL	20.1548 mL
5 mM	0.4031 mL	2.0155 mL	4.031 mL
10 mM	0.2015 mL	1.0077 mL	2.0155 mL
50 mM	0.0403 mL	0.2015 mL	0.4031 mL

Please select the appropriate solvent to prepare the stock solution, according to the solubility of the product in different solvents. Please use it as soon as possible.

Note: The dilution table applies only to solid products. For liquid products, please calculate the stock solution based on the stated concentration and/or density.

Inhibitor · Natural Compounds · Compound Libraries · Recombinant Proteins

This product is for Research Use Only · Not for Human or Veterinary or Therapeutic Use

Tel: 781-999-4286 E_mail: info@targetmol.com Address: 34 Washington Street, Wellesley Hills, MA 02481