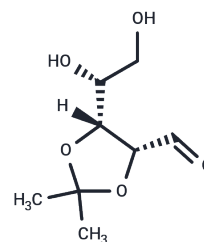


2,3-O-(1-Methylethylidene)-D-ribose

Chemical Properties

| | |
|-------------------|---|
| CAS No. : | 13199-25-2 |
| Formula: | C ₈ H ₁₄ O ₅ |
| Molecular Weight: | 190.19 |
| Storage: | Powder: -20°C for 3 years In solvent: -80°C for 1 year Actual storage temperature shall be subject to the COA. |



Biological Description

| | |
|---------------|---|
| Description | 2,3-O-(1-Methylethylidene)-D-ribose is a biochemical reagent used in glycobiology research. Glycobiology focuses on the study of sugar structures, synthesis, biology, and evolution, involving carbohydrate chemistry, glycan formation and degradation enzymology, protein-glycan recognition, and the role of glycans in biological systems. This field is closely linked with fundamental research, biomedicine, and biotechnology. |
| Targets(IC50) | Others |

Preparing Stock Solutions

| | 1mg | 5mg | 10mg |
|-------|-----------|------------|------------|
| 1 mM | 5.2579 mL | 26.2895 mL | 52.579 mL |
| 5 mM | 1.0516 mL | 5.2579 mL | 10.5158 mL |
| 10 mM | 0.5258 mL | 2.6289 mL | 5.2579 mL |
| 50 mM | 0.1052 mL | 0.5258 mL | 1.0516 mL |

Please select the appropriate solvent to prepare the stock solution, according to the solubility of the product in different solvents. Please use it as soon as possible.

Note: The dilution table applies only to solid products. For liquid products, please calculate the stock solution based on the stated concentration and/or density.

Inhibitor · Natural Compounds · Compound Libraries · Recombinant Proteins

This product is for Research Use Only · Not for Human or Veterinary or Therapeutic Use

Tel: 781-999-4286 E_mail: info@targetmol.com Address: 34 Washington Street, Wellesley Hills, MA 02481