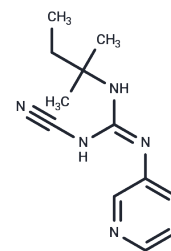


P-1075

## Chemical Properties

CAS No. : 60559-98-0  
 Formula: C<sub>12</sub>H<sub>17</sub>N<sub>5</sub>  
 Molecular Weight: 231.3  
 Storage: Powder: -20°C for 3 years | In solvent: -80°C for 1 year  
*Actual storage temperature shall be subject to the COA.*



## Biological Description

Description	P-1075 is a potent sulfonylurea receptor 2-associated ATP-sensitive potassium channels (SUR2-KIR6) activator (EC <sub>50</sub> = 45 nM). P-1075 opens opens mitoKATP channels and may be cardioprotective.
Targets(IC50)	Potassium Channel

## Solubility Information

Solubility	DMSO: 250 mg/mL (1080.85 mM),Sonication is recommended. (< 1 mg/ml refers to the product slightly soluble or insoluble)
In vivo Formulation	10% DMSO+40% PEG300+5% Tween 80+45% Saline: 5 mg/mL (21.62 mM),Sonication is recommended. <i>Please add the solvents sequentially, clarifying the solution as much as possible before adding the next one. Dissolve by heating and/or sonication if necessary. Working solution is recommended to be prepared and used immediately. The formulation provided above is for reference purposes only. In vivo formulations may vary and should be modified based on specific experimental conditions.</i>

## Preparing Stock Solutions

	1mg	5mg	10mg
1 mM	4.3234 mL	21.6169 mL	43.2339 mL
5 mM	0.8647 mL	4.3234 mL	8.6468 mL
10 mM	0.4323 mL	2.1617 mL	4.3234 mL
50 mM	0.0865 mL	0.4323 mL	0.8647 mL

Please select the appropriate solvent to prepare the stock solution, according to the solubility of the product in different solvents. Please use it as soon as possible.

Note: The dilution table applies only to solid products. For liquid products, please calculate the stock solution based on the stated concentration and/or density.

Reference

Schwanstecher M, et al. Potassium channel openers require ATP to bind to and act through sulfonylurea receptors. EMBO J. 1998 Oct 1;17(19):5529-35.

Oldenburg O, et al. P1075 opens mitochondrial K(ATP) channels and generates reactive oxygen species resulting in cardioprotection of rabbit hearts. J Mol Cell Cardiol. 2003 Sep;35(9):1035-42.

**Inhibitor · Natural Compounds · Compound Libraries · Recombinant Proteins**

This product is for Research Use Only · Not for Human or Veterinary or Therapeutic Use

Tel:781-999-4286 E\_mail:info@targetmol.com Address:34 Washington Street,Wellesley Hills,MA 02481