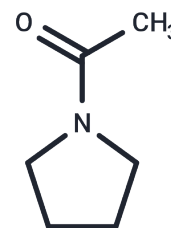


1-(Pyrrolidin-1-yl)ethanone

Chemical Properties

CAS No. :	4030-18-6
Formula:	C ₆ H ₁₁ NO
Molecular Weight:	113.16
Storage:	Powder: -20°C for 3 years In solvent: -80°C for 1 year Actual storage temperature shall be subject to the COA.



Biological Description

Description	1-(Pyrrolidin-1-yl)ethanone is a pyrrole derivative widely used in biochemical experiments and drug synthesis research.
Targets(IC50)	Others

Preparing Stock Solutions

	1mg	5mg	10mg
1 mM	8.837 mL	44.1852 mL	88.3704 mL
5 mM	1.7674 mL	8.837 mL	17.6741 mL
10 mM	0.8837 mL	4.4185 mL	8.837 mL
50 mM	0.1767 mL	0.8837 mL	1.7674 mL

Please select the appropriate solvent to prepare the stock solution, according to the solubility of the product in different solvents. Please use it as soon as possible.

Note: The dilution table applies only to solid products. For liquid products, please calculate the stock solution based on the stated concentration and/or density.

Inhibitor · Natural Compounds · Compound Libraries · Recombinant Proteins

This product is for Research Use Only · Not for Human or Veterinary or Therapeutic Use

Tel:781-999-4286 E_mail:info@targetmol.com Address:34 Washington Street,Wellesley Hills,MA 02481