

## 2,4-Dimethylthiophene

## Chemical Properties

CAS No. : 638-00-6

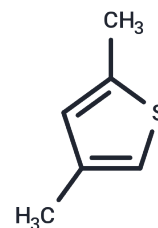
Formula: C<sub>6</sub>H<sub>8</sub>S

Molecular Weight: 112.19

Keep away from direct sunlight, Store at low temperature, Store under nitrogen

Storage: Pure form: -20°C for 3 years | In solvent: -80°C for 1 year

Actual storage temperature shall be subject to the COA.



## Biological Description

Description	2,4-Dimethylthiophene is a thiophene derivative widely used in biochemical experiments and drug synthesis research.
Targets(IC50)	Others

## Preparing Stock Solutions

	1mg	5mg	10mg
1 mM	8.9135 mL	44.5673 mL	89.1345 mL
5 mM	1.7827 mL	8.9135 mL	17.8269 mL
10 mM	0.8913 mL	4.4567 mL	8.9135 mL
50 mM	0.1783 mL	0.8913 mL	1.7827 mL

Please select the appropriate solvent to prepare the stock solution, according to the solubility of the product in different solvents. Please use it as soon as possible.

Note: The dilution table applies only to solid products. For liquid products, please calculate the stock solution based on the stated concentration and/or density.

Inhibitor · Natural Compounds · Compound Libraries · Recombinant Proteins

This product is for Research Use Only · Not for Human or Veterinary or Therapeutic Use

Tel: 781-999-4286

E\_mail: info@targetmol.com

Address: 34 Washington Street, Wellesley Hills, MA 02481