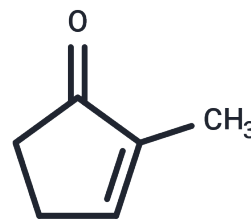


2-Methylcyclopent-2-enone

Chemical Properties

CAS No. :	1120-73-6
Formula:	C ₆ H ₈ O
Molecular Weight:	96.13
Storage:	Pure form: -20°C for 3 years In solvent: -80°C for 1 year Actual storage temperature shall be subject to the COA.



Biological Description

Description	2-Methylcyclopent-2-enone is a cyclic ketone widely used in biochemical experiments and drug synthesis research.
Targets(IC50)	Others

Preparing Stock Solutions

	1mg	5mg	10mg
1 mM	10.4026 mL	52.0129 mL	104.0258 mL
5 mM	2.0805 mL	10.4026 mL	20.8052 mL
10 mM	1.0403 mL	5.2013 mL	10.4026 mL
50 mM	0.2081 mL	1.0403 mL	2.0805 mL

Please select the appropriate solvent to prepare the stock solution, according to the solubility of the product in different solvents. Please use it as soon as possible.

Note: The dilution table applies only to solid products. For liquid products, please calculate the stock solution based on the stated concentration and/or density.

Inhibitor · Natural Compounds · Compound Libraries · Recombinant Proteins

This product is for Research Use Only · Not for Human or Veterinary or Therapeutic Use

Tel: 781-999-4286 E_mail: info@targetmol.com Address: 34 Washington Street, Wellesley Hills, MA 02481