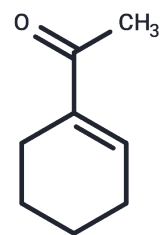


## 1-(Cyclohex-1-en-1-yl)ethanone

## Chemical Properties

CAS No. :	932-66-1
Formula:	C <sub>8</sub> H <sub>12</sub> O
Molecular Weight:	124.18
Storage:	Pure form: -20°C for 3 years   In solvent: -80°C for 1 year

Actual storage temperature shall be subject to the COA.



## Biological Description

Description	1-(Cyclohex-1-en-1-yl)ethanone is an enone widely used in biochemical experiments and drug synthesis research.
Targets(IC50)	Others

## Preparing Stock Solutions

	1mg	5mg	10mg
1 mM	8.0528 mL	40.2641 mL	80.5283 mL
5 mM	1.6106 mL	8.0528 mL	16.1057 mL
10 mM	0.8053 mL	4.0264 mL	8.0528 mL
50 mM	0.1611 mL	0.8053 mL	1.6106 mL

Please select the appropriate solvent to prepare the stock solution, according to the solubility of the product in different solvents. Please use it as soon as possible.

Note: The dilution table applies only to solid products. For liquid products, please calculate the stock solution based on the stated concentration and/or density.

Inhibitor · Natural Compounds · Compound Libraries · Recombinant Proteins

This product is for Research Use Only · Not for Human or Veterinary or Therapeutic Use

Tel: 781-999-4286 E\_mail: info@targetmol.com Address: 34 Washington Street, Wellesley Hills, MA 02481