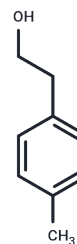


2-(p-Tolyl)ethanol

Chemical Properties

CAS No. :	699-02-5
Formula:	C ₉ H ₁₂ O
Molecular Weight:	136.19
Storage:	Store at 4°C Actual storage temperature shall be subject to the COA.



Biological Description

Description	2-(p-Tolyl)ethanol is an alcohol compound containing a toluene group, widely used in biochemical experiments and drug synthesis research.
Targets(IC50)	Others

Preparing Stock Solutions

	1mg	5mg	10mg
1 mM	7.3427 mL	36.7134 mL	73.4268 mL
5 mM	1.4685 mL	7.3427 mL	14.6854 mL
10 mM	0.7343 mL	3.6713 mL	7.3427 mL
50 mM	0.1469 mL	0.7343 mL	1.4685 mL

Please select the appropriate solvent to prepare the stock solution, according to the solubility of the product in different solvents. Please use it as soon as possible.

Note: The dilution table applies only to solid products. For liquid products, please calculate the stock solution based on the stated concentration and/or density.

Inhibitor · Natural Compounds · Compound Libraries · Recombinant Proteins

This product is for Research Use Only · Not for Human or Veterinary or Therapeutic Use

Tel: 781-999-4286 E_mail: info@targetmol.com Address: 34 Washington Street, Wellesley Hills, MA 02481