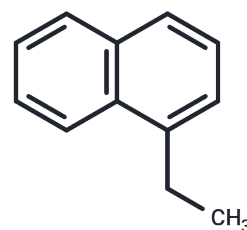


## 1-Ethyl-naphthalene

## Chemical Properties

CAS No. :	1127-76-0
Formula:	C <sub>12</sub> H <sub>12</sub>
Molecular Weight:	156.22
Storage:	Keep away from moisture Powder: -20°C for 3 years   In solvent: -80°C for 1 year <small>Actual storage temperature shall be subject to the COA.</small>



## Biological Description

Description	1-Ethyl-naphthalene exhibits antibacterial activity and can be used in biochemical experiments and drug synthesis.
Targets(IC50)	Antibacterial

## Preparing Stock Solutions

	1mg	5mg	10mg
1 mM	6.4012 mL	32.0061 mL	64.0123 mL
5 mM	1.2802 mL	6.4012 mL	12.8025 mL
10 mM	0.6401 mL	3.2006 mL	6.4012 mL
50 mM	0.128 mL	0.6401 mL	1.2802 mL

Please select the appropriate solvent to prepare the stock solution, according to the solubility of the product in different solvents. Please use it as soon as possible.

Note: The dilution table applies only to solid products. For liquid products, please calculate the stock solution based on the stated concentration and/or density.

## Reference

Unger MA, et al. Predicting survival of grass shrimp (*Palaemonetes pugio*) during ethyl-naphthalene, dimethylnaphthalene, and phenanthrene exposures differing in concentration and duration. *Environ Toxicol Chem.* 2007 Mar;26(3):528-34.

**Inhibitor · Natural Compounds · Compound Libraries · Recombinant Proteins**

This product is for Research Use Only · Not for Human or Veterinary or Therapeutic Use

Tel: 781-999-4286 E\_mail: info@targetmol.com Address: 34 Washington Street, Wellesley Hills, MA 02481