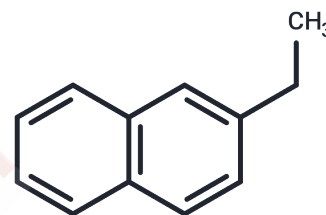


2-Ethyl-naphthalene

Chemical Properties

CAS No. :	939-27-5
Formula:	C ₁₂ H ₁₂
Molecular Weight:	156.22
Storage:	Store at 4°C <small>Actual storage temperature shall be subject to the COA.</small>



Biological Description

Description	2-Ethyl-naphthalene exhibits inhibitory activity against CYP1A2, CYP2A5, and CYP2A6 and can be used in biochemical experiments and drug synthesis.
Targets(IC50)	Cytochromes P450
In vitro	Using 2-Ethyl-naphthalene as a model substrate, the oxidation can be carried out in conventional biphasic or monophasic solvent systems. In either case, the reaction rate and product selectivity are identical. The reaction products indicate that the aromatic ring system is oxidized preferentially over the alkyl chain. [1]

Preparing Stock Solutions

	1mg	5mg	10mg
1 mM	6.4012 mL	32.0061 mL	64.0123 mL
5 mM	1.2802 mL	6.4012 mL	12.8025 mL
10 mM	0.6401 mL	3.2006 mL	6.4012 mL
50 mM	0.128 mL	0.6401 mL	1.2802 mL

Please select the appropriate solvent to prepare the stock solution, according to the solubility of the product in different solvents. Please use it as soon as possible.

Note: The dilution table applies only to solid products. For liquid products, please calculate the stock solution based on the stated concentration and/or density.

Reference

Nowicka E, et al. Selective oxidation of alkyl-substituted polyaromatics using ruthenium-ion-catalyzed oxidation. Chemistry. 2015 Mar 9;21(11):4285-93.

Inhibitor · Natural Compounds · Compound Libraries · Recombinant Proteins

This product is for Research Use Only · Not for Human or Veterinary or Therapeutic Use

Tel:781-999-4286 E_mail:info@targetmol.com Address:34 Washington Street,Wellesley Hills,MA 02481