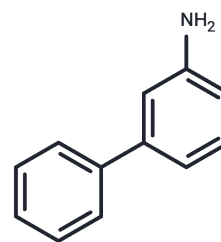


## [1,1'-Biphenyl]-3-amine

## Chemical Properties

CAS No. :	2243-47-2
Formula:	C12H11N
Molecular Weight:	169.22
Storage:	Store at 4°C Actual storage temperature shall be subject to the COA.



## Biological Description

Description	[1,1'-Biphenyl]-3-amine is an inhibitor of MAO-A and MAO-B and can inhibit the cell viability of HT-29, HEK 293, and MCF-7 cells.
Targets(IC50)	Apoptosis,MAO

## Preparing Stock Solutions

	1mg	5mg	10mg
1 mM	5.9095 mL	29.5473 mL	59.0947 mL
5 mM	1.1819 mL	5.9095 mL	11.8189 mL
10 mM	0.5909 mL	2.9547 mL	5.9095 mL
50 mM	0.1182 mL	0.5909 mL	1.1819 mL

Please select the appropriate solvent to prepare the stock solution, according to the solubility of the product in different solvents. Please use it as soon as possible.

Note: The dilution table applies only to solid products. For liquid products, please calculate the stock solution based on the stated concentration and/or density.

## Reference

Manley-King CI, Bergh JJ, Petzer JP. Inhibition of monoamine oxidase by selected C5- and C6-substituted isatin analogues. *Bioorganic & Medicinal Chemistry*. 2011 Jan;19(1):261-274.

Sánchez-Peris M, Falomir E, Murga J, Carda M, Marco JA. Synthesis and evaluation of biphenyl derivatives as potential downregulators of VEGF protein secretion and telomerase-related gene expressions. *Bioorganic & Medicinal Chemistry*. 2016 Jul;24(14):3108-3115.

**Inhibitor · Natural Compounds · Compound Libraries · Recombinant Proteins**

This product is for Research Use Only · Not for Human or Veterinary or Therapeutic Use

Tel:781-999-4286 E\_mail:info@targetmol.com Address:34 Washington Street,Wellesley Hills,MA 02481