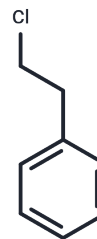


## (2-Chloroethyl)benzene

## Chemical Properties

CAS No. :	622-24-2
Formula:	C <sub>8</sub> H <sub>9</sub> Cl
Molecular Weight:	140.61
Storage:	Pure form: -20°C for 3 years   In solvent: -80°C for 1 year

Actual storage temperature shall be subject to the COA.



## Biological Description

Description	(2-Chloroethyl)benzene is a benzene derivative widely used in biochemical experiments and drug synthesis research.
Targets(IC50)	Others

## Preparing Stock Solutions

	1mg	5mg	10mg
1 mM	7.1119 mL	35.5593 mL	71.1187 mL
5 mM	1.4224 mL	7.1119 mL	14.2237 mL
10 mM	0.7112 mL	3.5559 mL	7.1119 mL
50 mM	0.1422 mL	0.7112 mL	1.4224 mL

Please select the appropriate solvent to prepare the stock solution, according to the solubility of the product in different solvents. Please use it as soon as possible.

Note: The dilution table applies only to solid products. For liquid products, please calculate the stock solution based on the stated concentration and/or density.

## Reference

Martin DE, et al. Resonant two-photon ionization and ab initio conformational analysis of haloethyl benzenes (PhCH(2)CH(2)X,X=Cl,F). J Chem Phys. 2007 Oct 7;127(13):134307.

Inhibitor · Natural Compounds · Compound Libraries · Recombinant Proteins

This product is for Research Use Only · Not for Human or Veterinary or Therapeutic Use

Tel:781-999-4286 E\_mail:info@targetmol.com Address:34 Washington Street,Wellesley Hills,MA 02481