

## Cyclohex-2-enol

## Chemical Properties

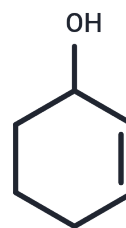
CAS No. : 822-67-3

Formula: C<sub>6</sub>H<sub>10</sub>O

Molecular Weight: 98.14

Storage: Pure form: -20°C for 3 years | In solvent: -80°C for 1 year

Actual storage temperature shall be subject to the COA.



## Biological Description

Description	Cyclohex-2-enol is an unsaturated cyclic alcohol widely used in biochemical experiments and drug synthesis research.
Targets(IC50)	Others

## Preparing Stock Solutions

	1mg	5mg	10mg
1 mM	10.1895 mL	50.9476 mL	101.8953 mL
5 mM	2.0379 mL	10.1895 mL	20.3791 mL
10 mM	1.019 mL	5.0948 mL	10.1895 mL
50 mM	0.2038 mL	1.019 mL	2.0379 mL

Please select the appropriate solvent to prepare the stock solution, according to the solubility of the product in different solvents. Please use it as soon as possible.

Note: The dilution table applies only to solid products. For liquid products, please calculate the stock solution based on the stated concentration and/or density.

## Reference

Frija LM, et al. Sigmatropic rearrangements in 5-allyloxytetrazoles. Org Biomol Chem. 2011 Sep 7;9(17):6040-54.

Inhibitor · Natural Compounds · Compound Libraries · Recombinant Proteins

This product is for Research Use Only · Not for Human or Veterinary or Therapeutic Use

Tel:781-999-4286 E\_mail:info@targetmol.com Address:34 Washington Street,Wellesley Hills,MA 02481