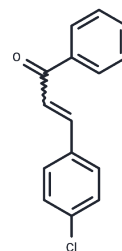


4-Chlorochalcone

Chemical Properties

CAS No. :	956-04-7
Formula:	C ₁₅ H ₁₁ ClO
Molecular Weight:	242.7
Storage:	Powder: -20°C for 3 years In solvent: -80°C for 1 year Actual storage temperature shall be subject to the COA.



Biological Description

Description	4-Chlorochalcone is a biologically active chalcone with potential inhibitory effects on human MAO-B and ROS/RNS production and is able to inhibit the growth of CAL51 cells.
Targets(IC50)	MAO,ROS
In vitro	4-Chlorochalcone strongly inhibits MAO-A (IC ₅₀ = 9.10 ± 0.038μM) and MAO-B (IC ₅₀ = 0.066 ± 0.0025μM) in vitro, with slight MAO-B selectivity. 4-Chlorochalcone weakly inhibits AChE (IC ₅₀ = 1.25 ± 0.42μM)[1].

Solubility Information

Solubility	H ₂ O: < 1 mg/mL (insoluble) DMSO: 100 mg/mL (412.03 mM),Sonication and heating are recommended. Ethanol: 1 mg/mL (4.12 mM),Sonication is recommended. (< 1 mg/ml refers to the product slightly soluble or insoluble)
------------	--

Preparing Stock Solutions

	1mg	5mg	10mg
1 mM	4.1203 mL	20.6016 mL	41.2031 mL
5 mM	0.8241 mL	4.1203 mL	8.2406 mL
10 mM	0.412 mL	2.0602 mL	4.1203 mL
50 mM	0.0824 mL	0.412 mL	0.8241 mL

Please select the appropriate solvent to prepare the stock solution, according to the solubility of the product in different solvents. Please use it as soon as possible.

Note: The dilution table applies only to solid products. For liquid products, please calculate the stock solution based on the stated concentration and/or density.

Reference

Oh JM, et al. Potent and selective inhibition of human monoamine oxidase-B by 4-dimethylaminochalcone and selected chalcone derivatives. Int J Biol Macromol. 2019 Sep 15;137:426-432.

Inhibitor · Natural Compounds · Compound Libraries · Recombinant Proteins

This product is for Research Use Only · Not for Human or Veterinary or Therapeutic Use

Tel:781-999-4286 E_mail:info@targetmol.com Address:34 Washington Street,Wellesley Hills,MA 02481