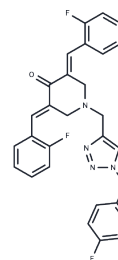


CT-1

Chemical Properties

CAS No. : 1983924-33-9
 Formula: C₂₉H₂₃F₃N₄O
 Molecular Weight: 500.51
 Storage: Powder: -20°C for 3 years | In solvent: -80°C for 1 year
 Actual storage temperature shall be subject to the COA.



Biological Description

Description	CT-1 is a DNA minor groove ligand and causes p53-dependent breast cancer cell apoptosis.
Targets(IC50)	Apoptosis,Akt,p53

Solubility Information

Solubility	DMSO: 5.01 mg/mL (10.01 mM),Sonication is recommended. (< 1 mg/ml refers to the product slightly soluble or insoluble)
------------	---

Preparing Stock Solutions

	1mg	5mg	10mg
1 mM	1.998 mL	9.9898 mL	19.9796 mL
5 mM	0.3996 mL	1.998 mL	3.9959 mL
10 mM	0.1998 mL	0.999 mL	1.998 mL
50 mM	0.040 mL	0.1998 mL	0.3996 mL

Please select the appropriate solvent to prepare the stock solution, according to the solubility of the product in different solvents. Please use it as soon as possible.

Note: The dilution table applies only to solid products. For liquid products, please calculate the stock solution based on the stated concentration and/or density.

Reference

Messerli M, et al. Emphysema quantification and lung volumetry in chest X-ray equivalent ultralow dose CT - Intra-individual comparison with standard dose CT. *Eur J Radiol.* 2017 Jun;91:1-9.

Jayaraman J, et al. A bacterial acetyltransferase triggers immunity in *Arabidopsis thaliana* independent of hypersensitive response. *Sci Rep.* 2017 Jun 15;7(1):3557.

Mandalapu D, et al. Synthesis and biological evaluation of some novel triazole hybrids of curcumin mimics and their selective anticancer activity against breast and prostate cancer cell lines. *Bioorg Med Chem Lett.* 2016 Sep 1; 26(17):4223-32.

Taketomi S, et al. Effects of initial graft tension on femoral tunnel widening after anatomic anterior cruciate ligament reconstruction using a bone-patellar tendon-bone graft. *Arch Orthop Trauma Surg.* 2017 Jun 14.

Inhibitor · Natural Compounds · Compound Libraries · Recombinant Proteins

This product is for Research Use Only · Not for Human or Veterinary or Therapeutic Use

Tel:781-999-4286 E_mail:info@targetmol.com Address:34 Washington Street,Wellesley Hills,MA 02481