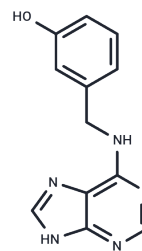


Meta-Topolin

Chemical Properties

CAS No. :	75737-38-1
Formula:	C ₁₂ H ₁₁ N ₅ O
Molecular Weight:	241.25
Storage:	Store at low temperature, Keep away from direct sunlight Powder: -20°C for 3 years In solvent: -80°C for 1 year <small>Actual storage temperature shall be subject to the COA.</small>



Biological Description

Description	Meta-Topolin (m-Topolin) , a highly active aromatic cytokinin from poplar leaves
Targets(IC50)	Others

Solubility Information

Solubility	DMSO: 125 mg/mL (518.13 mM), Sonication is recommended. (< 1 mg/ml refers to the product slightly soluble or insoluble)
In vivo Formulation	10% DMSO+40% PEG300+5% Tween 80+45% Saline: 2 mg/mL (8.29 mM), Sonication is recommended. <i>Please add the solvents sequentially, clarifying the solution as much as possible before adding the next one. Dissolve by heating and/or sonication if necessary. Working solution is recommended to be prepared and used immediately. The formulation provided above is for reference purposes only. In vivo formulations may vary and should be modified based on specific experimental conditions.</i>

Preparing Stock Solutions

	1mg	5mg	10mg
1 mM	4.1451 mL	20.7254 mL	41.4508 mL
5 mM	0.829 mL	4.1451 mL	8.2902 mL
10 mM	0.4145 mL	2.0725 mL	4.1451 mL
50 mM	0.0829 mL	0.4145 mL	0.829 mL

Please select the appropriate solvent to prepare the stock solution, according to the solubility of the product in different solvents. Please use it as soon as possible.

Note: The dilution table applies only to solid products. For liquid products, please calculate the stock solution based on the stated concentration and/or density.

Reference

Strnad M , Hanus J , Vanek T , et al. Meta-topolin, a highly active aromatic cytokinin from poplar leaves (populus x canadensis moench. cv. Robusta)[J]. ChemInform, 2010, 28(35).

Narçin Palavan-Ünsal, Ergül Çetin, Serap Sağlam-Çağ. Growth responses of excised radish cotyledons to meta-topolin[J]. Canadian Journal of Plant Science, 2002, 82(1):191-194.

Inhibitor · Natural Compounds · Compound Libraries · Recombinant Proteins

This product is for Research Use Only · Not for Human or Veterinary or Therapeutic Use

Tel:781-999-4286 E_mail:info@targetmol.com Address:34 Washington Street,Wellesley Hills,MA 02481