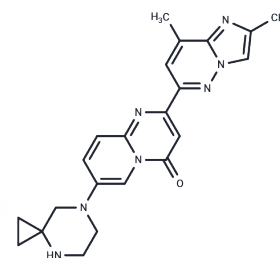


Risdiplam

Chemical Properties

CAS No. :	1825352-65-5
Formula:	C ₂₂ H ₂₃ N ₇ O
Molecular Weight:	401.46
Storage:	Powder: -20°C for 3 years In solvent: -80°C for 1 year Actual storage temperature shall be subject to the COA.



Biological Description

Description	Risdiplam (RG7916) is a centrally and peripherally distributed and orally administrable small molecule SMN2 pre-mRNA splicing modifier that increases survival motor neuron (SMN) protein levels.
Targets(IC50)	DNA/RNA Synthesis
In vitro	METHODS: LLC-PK1, MDCKII, L-MDR1 (LLC-PK1 cells transfected with human MDR1), L-Mdr1a (LLC-PK1 cells transfected with rodent Mdr1a), M-BCRP (MDCKII cells transfected with human breast cancer resistance protein; BCRP), and M-Bcrp1 (MDCKII cells transfected with rodent Bcrp1) cells were treated with Risdiplam (RG7916) (1 μM) and 10 μM Lucifer Yellow added to the donor compartment to initiate transcellular transport. RESULTS Risdiplam had a mean passive permeability of approximately 350 nm/s in parental LLC-PK1 cells. Similar permeability was observed in L-MDR1, L-Mdra1, M-BCRP, and M-Bcrp cells in the presence of the inhibitor. [1]
In vivo	METHODS: Wistar rats received either a single oral dose of 14C-risdiplam (RO7034067) (by gastric gavage) or a single intravenous dose of 14C-risdiplam (by tail vein injection). Dose levels for oral and intravenous doses were 5 or 2 mg/kg, respectively. RESULTS Radioactive 14C-risdiplam (RO7034067) was rapidly and extensively distributed in rat QWBA after oral administration, with peak concentrations in most tissues measured at 2 hours. Radioactivity concentrations in plasma and tissues declined during the study period. [1]

Solubility Information

Solubility	DMSO: < 1 mg/mL (insoluble or slightly soluble), Sonication is recommended. Ethanol: 2 mg/mL (4.98 mM), Sonication is recommended. H ₂ O: 2.22 mg/mL (5.53 mM), when pH is adjusted to 6 with HCl. Sonication is recommended. (< 1 mg/ml refers to the product slightly soluble or insoluble)
------------	---

Preparing Stock Solutions

	1mg	5mg	10mg
1 mM	2.4909 mL	12.4545 mL	24.9091 mL
5 mM	0.4982 mL	2.4909 mL	4.9818 mL
10 mM	0.2491 mL	1.2455 mL	2.4909 mL
50 mM	0.0498 mL	0.2491 mL	0.4982 mL

Please select the appropriate solvent to prepare the stock solution, according to the solubility of the product in different solvents. Please use it as soon as possible.

Note: The dilution table applies only to solid products. For liquid products, please calculate the stock solution based on the stated concentration and/or density.

Reference

Poirier A, et al. Risdiplam distributes and increases SMN protein in both the central nervous system and peripheral organs. *Pharmacol Res Perspect.* 2018 Nov 29;6(6):e00447.

Inhibitor · Natural Compounds · Compound Libraries · Recombinant Proteins

This product is for Research Use Only · Not for Human or Veterinary or Therapeutic Use

Tel:781-999-4286 E_mail:info@targetmol.com Address:34 Washington Street,Wellesley Hills,MA 02481