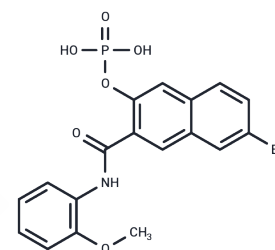


Naphthol AS-BI phosphate

Chemical Properties

CAS No. : 1919-91-1
 Formula: C₁₈H₁₅BrNO₆P
 Molecular Weight: 452.193
 Storage: Powder: -20°C for 3 years | In solvent: -80°C for 1 year
Actual storage temperature shall be subject to the COA.



Biological Description

Description	Naphthol AS-BI phosphate serves as both an acidic and alkaline phosphatase substrate, suitable for use in fluorescence assays. It is also utilized as a biomaterial or organic compound relevant to life science research.
Targets(IC50)	Others

Preparing Stock Solutions

	1mg	5mg	10mg
1 mM	2.2115 mL	11.0573 mL	22.1146 mL
5 mM	0.4423 mL	2.2115 mL	4.4229 mL
10 mM	0.2211 mL	1.1057 mL	2.2115 mL
50 mM	0.0442 mL	0.2211 mL	0.4423 mL

Please select the appropriate solvent to prepare the stock solution, according to the solubility of the product in different solvents. Please use it as soon as possible.

Note: The dilution table applies only to solid products. For liquid products, please calculate the stock solution based on the stated concentration and/or density.

Inhibitor · Natural Compounds · Compound Libraries · Recombinant Proteins

This product is for Research Use Only · Not for Human or Veterinary or Therapeutic Use

Tel: 781-999-4286 E_mail: info@targetmol.com Address: 34 Washington Street, Wellesley Hills, MA 02481