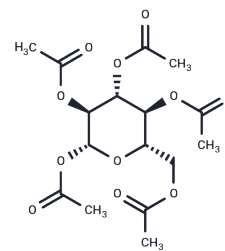


$\beta$ -L-Glucose pentaacetate

## Chemical Properties

CAS No. : 66966-07-2  
 Formula: C<sub>16</sub>H<sub>22</sub>O<sub>11</sub>  
 Molecular Weight: 390.34  
 Storage: Powder: -20°C for 3 years | In solvent: -80°C for 1 year  
 Actual storage temperature shall be subject to the COA.



## Biological Description

Description	$\beta$ -L-Glucose pentaacetate is a reagent used in biochemical reactions.
Targets(IC50)	Others

## Preparing Stock Solutions

	1mg	5mg	10mg
1 mM	2.5619 mL	12.8093 mL	25.6187 mL
5 mM	0.5124 mL	2.5619 mL	5.1237 mL
10 mM	0.2562 mL	1.2809 mL	2.5619 mL
50 mM	0.0512 mL	0.2562 mL	0.5124 mL

Please select the appropriate solvent to prepare the stock solution, according to the solubility of the product in different solvents. Please use it as soon as possible.

Note: The dilution table applies only to solid products. For liquid products, please calculate the stock solution based on the stated concentration and/or density.

Inhibitor · Natural Compounds · Compound Libraries · Recombinant Proteins

This product is for Research Use Only · Not for Human or Veterinary or Therapeutic Use

Tel:781-999-4286 E\_mail:info@targetmol.com Address:34 Washington Street,Wellesley Hills,MA 02481