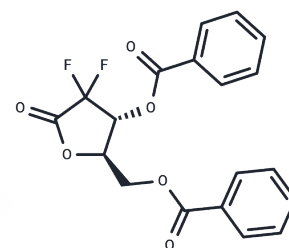


## 2-Deoxy-2,2-difluoro-D-erythro-pentonic acid $\gamma$ -Lactone 3,5-dibenzoate

### Chemical Properties

CAS No. :	122111-01-7
Formula:	C <sub>19</sub> H <sub>14</sub> F <sub>2</sub> O <sub>6</sub>
Molecular Weight:	376.3077
Storage:	Store at RT <small>Actual storage temperature shall be subject to the COA.</small>



### Biological Description

Description	2-Deoxy-2,2-difluoro-D-erythro-pentonic acid $\gamma$ -Lactone 3,5-dibenzoate is a synthetically produced fluorinated carbohydrate derivative that can be used in glycobiology studies.
Targets(IC50)	Others

### Preparing Stock Solutions

	1mg	5mg	10mg
1 mM	2.6574 mL	13.2869 mL	26.5738 mL
5 mM	0.5315 mL	2.6574 mL	5.3148 mL
10 mM	0.2657 mL	1.3287 mL	2.6574 mL
50 mM	0.0531 mL	0.2657 mL	0.5315 mL

Please select the appropriate solvent to prepare the stock solution, according to the solubility of the product in different solvents. Please use it as soon as possible.

Note: The dilution table applies only to solid products. For liquid products, please calculate the stock solution based on the stated concentration and/or density.

**Inhibitor · Natural Compounds · Compound Libraries · Recombinant Proteins**

This product is for Research Use Only · Not for Human or Veterinary or Therapeutic Use

Tel:781-999-4286 E\_mail:info@targetmol.com Address:34 Washington Street,Wellesley Hills,MA 02481