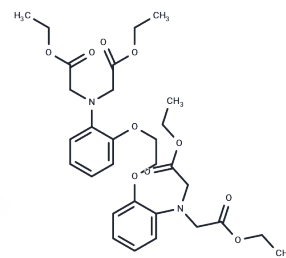


Bapta tetraethyl ester

Chemical Properties

CAS No. :	73630-07-6
Formula:	C30H40N2O10
Molecular Weight:	588.646
Storage:	Powder: -20°C for 3 years In solvent: -80°C for 1 year Actual storage temperature shall be subject to the COA.



Biological Description

Description	Bapta tetraethyl ester is a biochemical reagent.
Targets(IC50)	Others

Preparing Stock Solutions

	1mg	5mg	10mg
1 mM	1.6988 mL	8.494 mL	16.988 mL
5 mM	0.3398 mL	1.6988 mL	3.3976 mL
10 mM	0.1699 mL	0.8494 mL	1.6988 mL
50 mM	0.034 mL	0.1699 mL	0.3398 mL

Please select the appropriate solvent to prepare the stock solution, according to the solubility of the product in different solvents. Please use it as soon as possible.

Note: The dilution table applies only to solid products. For liquid products, please calculate the stock solution based on the stated concentration and/or density.

Inhibitor · Natural Compounds · Compound Libraries · Recombinant Proteins

This product is for Research Use Only · Not for Human or Veterinary or Therapeutic Use

Tel:781-999-4286 E_mail:info@targetmol.com Address:34 Washington Street,Wellesley Hills,MA 02481