

Azido-mono-amide-DOTA

Chemical Properties

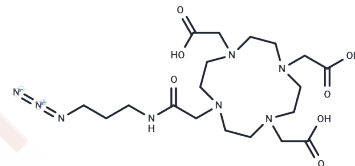
CAS No. : 1227407-76-2

Formula: C₁₉H₃₄N₈O₇

Molecular Weight: 486.5227

Storage: Powder: -20°C for 3 years | In solvent: -80°C for 1 year

Actual storage temperature shall be subject to the COA.



Biological Description

Description	Azido-mono-amide-DOTA is a bifunctional chelator (Bifunctional Chelator; BFC) and a macrocyclic DOTA derivative designed for tumor pretargeting. It facilitates the conjugation of peptides and radionuclides.
Targets(IC50)	Others

Preparing Stock Solutions

	1mg	5mg	10mg
1 mM	2.0554 mL	10.2771 mL	20.5541 mL
5 mM	0.4111 mL	2.0554 mL	4.1108 mL
10 mM	0.2055 mL	1.0277 mL	2.0554 mL
50 mM	0.0411 mL	0.2055 mL	0.4111 mL

Please select the appropriate solvent to prepare the stock solution, according to the solubility of the product in different solvents. Please use it as soon as possible.

Note: The dilution table applies only to solid products. For liquid products, please calculate the stock solution based on the stated concentration and/or density.

Inhibitor · Natural Compounds · Compound Libraries · Recombinant Proteins

This product is for Research Use Only · Not for Human or Veterinary or Therapeutic Use

Tel:781-999-4286

E_mail:info@targetmol.com

Address:34 Washington Street,Wellesley Hills,MA 02481