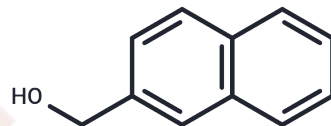


## 2-Naphthalenemethanol

## Chemical Properties

|                   |   |
|-------------------|---|
| CAS No. :         | 1592-38-7   |
| Formula:          | C <sub>11</sub> H <sub>10</sub> O   |
| Molecular Weight: | 158.1965  |
| Storage:          | Powder: -20°C for 3 years   In solvent: -80°C for 1 year<br>Actual storage temperature shall be subject to the COA. |



## Biological Description

|               |   |
|---------------|---|
| Description   | 2-Naphthalenemethanol is a metabolite of the environmental pollutant 2-methylnaphthalene. It forms covalent bonds with alveolar proteins and induces lung toxicity. |
| Targets(IC50) | Endogenous Metabolite   |

## Preparing Stock Solutions

|       | 1mg       | 5mg        | 10mg       |
|-------|-----------|------------|------------|
| 1 mM  | 6.3211 mL | 31.6056 mL | 63.2111 mL |
| 5 mM  | 1.2642 mL | 6.3211 mL  | 12.6422 mL |
| 10 mM | 0.6321 mL | 3.1606 mL  | 6.3211 mL  |
| 50 mM | 0.1264 mL | 0.6321 mL  | 1.2642 mL  |

Please select the appropriate solvent to prepare the stock solution, according to the solubility of the product in different solvents. Please use it as soon as possible.

Note: The dilution table applies only to solid products. For liquid products, please calculate the stock solution based on the stated concentration and/or density.

**Inhibitor · Natural Compounds · Compound Libraries · Recombinant Proteins**

This product is for Research Use Only · Not for Human or Veterinary or Therapeutic Use

Tel: 781-999-4286 E\_mail: info@targetmol.com Address: 34 Washington Street, Wellesley Hills, MA 02481