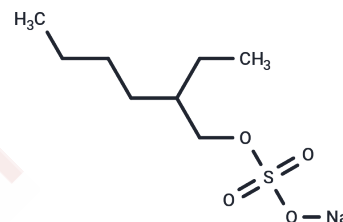


Sodium 2-ethylhexyl sulfate (40% in water)

Chemical Properties

CAS No. :	126-92-1
Formula:	C ₈ H ₁₇ NaO ₄ S
Molecular Weight:	232.273
Storage:	-20°C for 2 years, 4°C for 1 year <small>Actual storage temperature shall be subject to the COA.</small>



Biological Description

Description	Sodium 2-ethylhexyl sulfate (40% in water) is an anionic surfactant commonly employed as a detergent, wetting agent, and emulsifier in various industrial processes, notably in the manufacture of personal care products, cleaners, and textile auxiliaries. Its distinctive chemical properties make it an effective ingredient in numerous applications by reducing surface tension and enhancing cleaning performance.
-------------	--

Preparing Stock Solutions

	1mg	5mg	10mg
1 mM	4.3053 mL	21.5267 mL	43.0533 mL
5 mM	0.8611 mL	4.3053 mL	8.6107 mL
10 mM	0.4305 mL	2.1527 mL	4.3053 mL
50 mM	0.0861 mL	0.4305 mL	0.8611 mL

Please select the appropriate solvent to prepare the stock solution, according to the solubility of the product in different solvents. Please use it as soon as possible.

Note: The dilution table applies only to solid products. For liquid products, please calculate the stock solution based on the stated concentration and/or density.

Inhibitor · Natural Compounds · Compound Libraries · Recombinant Proteins

This product is for Research Use Only · Not for Human or Veterinary or Therapeutic Use

Tel:781-999-4286 E_mail:info@targetmol.com Address:34 Washington Street,Wellesley Hills,MA 02481