

Diheptyl phthalate

Chemical Properties

CAS No. : 3648-21-3

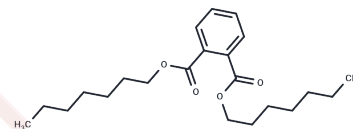
Formula: C₂₂H₃₄O₄

Molecular Weight: 362.503

Pure form: -20°C for 3 years | In solvent: -80°C for 1

Storage: year

Actual storage temperature shall be subject to the COA.



Biological Description

Description

Diheptyl phthalate belongs to the class of phthalate esters and consists of two heptyl (C7) chains attached to the main phthalate backbone. This compound is commonly used as a plasticizer in various polymer materials, such as PVC, to enhance flexibility and durability. It also serves as a lubricant, solvent, or additive in diverse industrial applications, including coatings, adhesives, and sealants. However, Diheptyl phthalate is identified as an environmental pollutant and health hazard due to its potential endocrine disruption and toxicity.

Preparing Stock Solutions

	1mg	5mg	10mg
1 mM	2.7586 mL	13.7931 mL	27.5862 mL
5 mM	0.5517 mL	2.7586 mL	5.5172 mL
10 mM	0.2759 mL	1.3793 mL	2.7586 mL
50 mM	0.0552 mL	0.2759 mL	0.5517 mL

Please select the appropriate solvent to prepare the stock solution, according to the solubility of the product in different solvents. Please use it as soon as possible.

Note: The dilution table applies only to solid products. For liquid products, please calculate the stock solution based on the stated concentration and/or density.

Inhibitor · Natural Compounds · Compound Libraries · Recombinant Proteins

This product is for Research Use Only · Not for Human or Veterinary or Therapeutic Use

Tel: 781-999-4286

E_mail: info@targetmol.com

Address: 34 Washington Street, Wellesley Hills, MA 02481