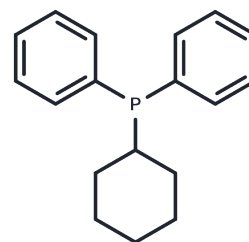


## Cyclohexyldiphenylphosphine

## Chemical Properties

CAS No. :	6372-42-5
Formula:	C <sub>18</sub> H <sub>21</sub> P
Molecular Weight:	268.3331
Storage:	Keep away from direct sunlight, Store under nitrogen Powder: -20°C for 3 years   In solvent: -80°C for 1 year <small>Actual storage temperature shall be subject to the COA.</small>



## Biological Description

Description	Cyclohexyldiphenylphosphine is a biochemical reagent that can be used as a biomaterial for life science related research and as a sulfonylation reagent for organic synthesis and drug discovery.
-------------	---

## Preparing Stock Solutions

	1mg	5mg	10mg
1 mM	3.7268 mL	18.6338 mL	37.2675 mL
5 mM	0.7454 mL	3.7268 mL	7.4535 mL
10 mM	0.3727 mL	1.8634 mL	3.7268 mL
50 mM	0.0745 mL	0.3727 mL	0.7454 mL

Please select the appropriate solvent to prepare the stock solution, according to the solubility of the product in different solvents. Please use it as soon as possible.

Note: The dilution table applies only to solid products. For liquid products, please calculate the stock solution based on the stated concentration and/or density.

**Inhibitor · Natural Compounds · Compound Libraries · Recombinant Proteins**

This product is for Research Use Only · Not for Human or Veterinary or Therapeutic Use

Tel: 781-999-4286 E\_mail: info@targetmol.com Address: 34 Washington Street, Wellesley Hills, MA 02481