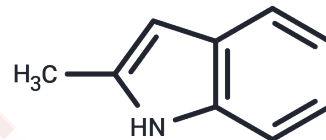


## 2-Methylindole

## Chemical Properties

CAS No. :	95-20-5
Formula:	C <sub>9</sub> H <sub>9</sub> N
Molecular Weight:	131.17
Storage:	Store at RT <small>Actual storage temperature shall be subject to the COA.</small>



## Biological Description

Description	2-Methylindole has antibacterial activity against Rhizoctonia solani and can inhibit indoleamine 2,3-dioxygenase and AchE. It is often used in organic synthesis and biochemical experiments.
Targets(IC50)	Antibacterial

## Solubility Information

Solubility	DMSO: 80 mg/mL (609.9 mM), Sonication is recommended. ( $< 1$ mg/ml refers to the product slightly soluble or insoluble)
------------	---

## Preparing Stock Solutions

	1mg	5mg	10mg
1 mM	7.6237 mL	38.1185 mL	76.2369 mL
5 mM	1.5247 mL	7.6237 mL	15.2474 mL
10 mM	0.7624 mL	3.8118 mL	7.6237 mL
50 mM	0.1525 mL	0.7624 mL	1.5247 mL

Please select the appropriate solvent to prepare the stock solution, according to the solubility of the product in different solvents. Please use it as soon as possible.

Note: The dilution table applies only to solid products. For liquid products, please calculate the stock solution based on the stated concentration and/or density.

## Reference

Padmapriya, M., et al. Synthetic approaches, emerging applications, and challenges of indole-based five-membered heterocycles in medicinal chemistry. *Discov Appl Sci* 7, 208 (2025).

**Inhibitor · Natural Compounds · Compound Libraries · Recombinant Proteins**

This product is for Research Use Only · Not for Human or Veterinary or Therapeutic Use

Tel:781-999-4286 E\_mail:info@targetmol.com Address:34 Washington Street,Wellesley Hills,MA 02481