

## Alexa fluor 647 maleimide

## Chemical Properties

CAS No. : 1825332-75-9

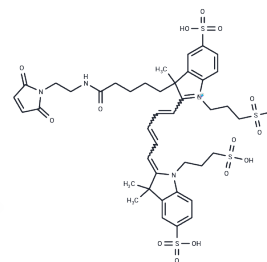
Formula: C<sub>41</sub>H<sub>50</sub>N<sub>4</sub>O<sub>15</sub>S<sub>4</sub>

Molecular Weight: 967.11

Storage: Keep away from direct sunlight, Store at low temperature

Store at -20°C

Actual storage temperature shall be subject to the COA.



## Biological Description

Description	Alexa fluor 647 maleimide is a water-soluble fluorescent dye that maintains stability under a broad range of physiological conditions. Alexa fluor 647 maleimide facilitates the covalent attachment of fluorescent groups to proteins through selective reaction with thiol groups, thereby enabling precise labeling. This labeling method offers both high sensitivity and specificity, allowing detection of proteins at very low concentrations. Alexa fluor 647 maleimide is widely applied in the study of protein expression and localization, and it can also be conjugated to antibodies for labeling cell surface antigens or specific proteins within tissues [Ex/Em(nm)=651/671].
Targets(IC50)	Others

## Preparing Stock Solutions

	1mg	5mg	10mg
1 mM	1.034 mL	5.170 mL	10.3401 mL
5 mM	0.2068 mL	1.034 mL	2.068 mL
10 mM	0.1034 mL	0.517 mL	1.034 mL
50 mM	0.0207 mL	0.1034 mL	0.2068 mL

Please select the appropriate solvent to prepare the stock solution, according to the solubility of the product in different solvents. Please use it as soon as possible.

Note: The dilution table applies only to solid products. For liquid products, please calculate the stock solution based on the stated concentration and/or density.

Reference

Gebhardt C, et al. Molecular and Spectroscopic Characterization of Green and Red Cyanine Fluorophores from the Alexa Fluor and AF Series\*. Chemphyschem. 2021 Aug 4;22(15):1566-1583.

Fan S, et al. Observing the Reversible Single Molecule Electrochemistry of Alexa Fluor 647 Dyes by Total Internal Reflection Fluorescence Microscopy. Angew Chem Int Ed Engl. 2019 Oct 7;58(41):14495-14498.

**Inhibitor · Natural Compounds · Compound Libraries · Recombinant Proteins**

This product is for Research Use Only· Not for Human or Veterinary or Therapeutic Use

Tel:781-999-4286 E\_mail:info@targetmol.com Address:34 Washington Street,Wellesley Hills,MA 02481