

Laminin Penta Peptide, amide

Chemical Properties

CAS No. : 110590-65-3

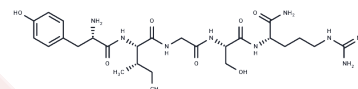
Formula: C₂₆H₄₃N₉O₇

Molecular Weight: 593.68

Keep away from moisture

Storage: Powder: -20°C for 3 years | In solvent: -80°C for 1 year

Actual storage temperature shall be subject to the COA.



Biological Description

Description	Laminin Penta Peptide, amide is a polypeptide molecule with the sequence YIGSR-NH ₂ .
Targets(IC ₅₀)	TGF-beta/Smad

Preparing Stock Solutions

	1mg	5mg	10mg
1 mM	1.6844 mL	8.422 mL	16.8441 mL
5 mM	0.3369 mL	1.6844 mL	3.3688 mL
10 mM	0.1684 mL	0.8422 mL	1.6844 mL
50 mM	0.0337 mL	0.1684 mL	0.3369 mL

Please select the appropriate solvent to prepare the stock solution, according to the solubility of the product in different solvents. Please use it as soon as possible.

Note: The dilution table applies only to solid products. For liquid products, please calculate the stock solution based on the stated concentration and/or density.

Inhibitor · Natural Compounds · Compound Libraries · Recombinant Proteins

This product is for Research Use Only · Not for Human or Veterinary or Therapeutic Use

Tel: 781-999-4286 E_mail: info@targetmol.com Address: 34 Washington Street, Wellesley Hills, MA 02481