

$\alpha$ -Bag Cell Peptide (1-9)

## Chemical Properties

CAS No. :

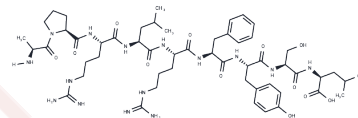
Formula: C<sub>53</sub>H<sub>83</sub>N<sub>15</sub>O<sub>12</sub>

Molecular Weight: 1122.32

Keep away from moisture

Storage: Powder: -20°C for 3 years | In solvent: -80°C for 1 year

Actual storage temperature shall be subject to the COA.



## Biological Description

Description

 $\alpha$ -Bag Cell Peptide (1-9) is a polypeptide molecule with the sequence APRLRFYSL.

## Preparing Stock Solutions

	1mg	5mg	10mg
1 mM	0.891 mL	4.4551 mL	8.9101 mL
5 mM	0.1782 mL	0.891 mL	1.782 mL
10 mM	0.0891 mL	0.4455 mL	0.891 mL
50 mM	0.0178 mL	0.0891 mL	0.1782 mL

Please select the appropriate solvent to prepare the stock solution, according to the solubility of the product in different solvents. Please use it as soon as possible.

Note: The dilution table applies only to solid products. For liquid products, please calculate the stock solution based on the stated concentration and/or density.

Inhibitor · Natural Compounds · Compound Libraries · Recombinant Proteins

This product is for Research Use Only · Not for Human or Veterinary or Therapeutic Use

Tel: 781-999-4286

E\_mail: info@targetmol.com

Address: 34 Washington Street, Wellesley Hills, MA 02481