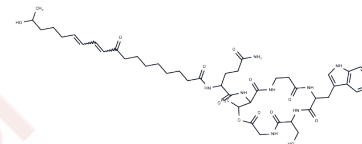


Aselacin B

Chemical Properties

| | |
|-------------------|---|
| CAS No. : | 156223-07-3 |
| Formula: | C46H66N8O12 |
| Molecular Weight: | 923.063 |
| Storage: | Powder: -20°C for 3 years In solvent: -80°C for 1 year Actual storage temperature shall be subject to the COA. |



Biological Description

| | |
|---------------|---|
| Description | Aselacin B targets the endothelin-1 receptor (ET-1 Receptor) and inhibits the binding of ET-1 to both ETA and ETB receptors. It is used in cardiovascular disease research. |
| Targets(IC50) | Endothelin Receptor |

Preparing Stock Solutions

| | 1mg | 5mg | 10mg |
|-------|-----------|-----------|------------|
| 1 mM | 1.0834 mL | 5.4168 mL | 10.8335 mL |
| 5 mM | 0.2167 mL | 1.0834 mL | 2.1667 mL |
| 10 mM | 0.1083 mL | 0.5417 mL | 1.0834 mL |
| 50 mM | 0.0217 mL | 0.1083 mL | 0.2167 mL |

Please select the appropriate solvent to prepare the stock solution, according to the solubility of the product in different solvents. Please use it as soon as possible.

Note: The dilution table applies only to solid products. For liquid products, please calculate the stock solution based on the stated concentration and/or density.

Inhibitor · Natural Compounds · Compound Libraries · Recombinant Proteins

This product is for Research Use Only · Not for Human or Veterinary or Therapeutic Use

Tel:781-999-4286 E_mail:info@targetmol.com Address:34 Washington Street,Wellesley Hills,MA 02481