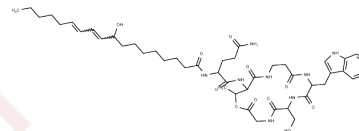


Aselacin A

Chemical Properties

CAS No. :	156223-06-2
Formula:	C46H68N8O11
Molecular Weight:	909.079
Storage:	Powder: -20°C for 3 years In solvent: -80°C for 1 year Actual storage temperature shall be subject to the COA.



Biological Description

Description	Aselacin A targets the endothelin-1 receptor (ET-1 Receptor) and inhibits the binding of ET-1 to both ETA and ETB receptors. It effectively impedes the binding of ET-1 to bovine atrial membranes and porcine brain membranes, with IC50 values of 22 µg/mL and 20 µg/mL, respectively. Aselacin A is applicable for cardiovascular disease research.
Targets(IC50)	Endothelin Receptor

Preparing Stock Solutions

	1mg	5mg	10mg
1 mM	1.100 mL	5.5001 mL	11.0001 mL
5 mM	0.220 mL	1.100 mL	2.200 mL
10 mM	0.110 mL	0.550 mL	1.100 mL
50 mM	0.022 mL	0.110 mL	0.220 mL

Please select the appropriate solvent to prepare the stock solution, according to the solubility of the product in different solvents. Please use it as soon as possible.

Note: The dilution table applies only to solid products. For liquid products, please calculate the stock solution based on the stated concentration and/or density.

Inhibitor · Natural Compounds · Compound Libraries · Recombinant Proteins

This product is for Research Use Only · Not for Human or Veterinary or Therapeutic Use

Tel:781-999-4286 E_mail:info@targetmol.com Address:34 Washington Street,Wellesley Hills,MA 02481