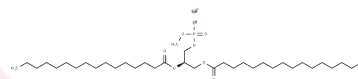


16:0 Phosphatidylmethanol sodium

Chemical Properties

CAS No. :	92609-89-7
Formula:	C ₃₆ H ₇₀ NaO ₈ P
Molecular Weight:	684.9
Storage:	Powder: -20°C for 3 years In solvent: -80°C for 1 year Actual storage temperature shall be subject to the COA.



Biological Description

Description	16:0 Phosphatidylmethanol (1,2-Dipalmitoyl-sn-glycero-3-phosphomethanol) sodium is a phospholipid alcohol featuring a methanol head group.
Targets(IC50)	Others

Preparing Stock Solutions

	1mg	5mg	10mg
1 mM	1.4601 mL	7.3003 mL	14.6007 mL
5 mM	0.292 mL	1.4601 mL	2.9201 mL
10 mM	0.146 mL	0.730 mL	1.4601 mL
50 mM	0.0292 mL	0.146 mL	0.292 mL

Please select the appropriate solvent to prepare the stock solution, according to the solubility of the product in different solvents. Please use it as soon as possible.

Note: The dilution table applies only to solid products. For liquid products, please calculate the stock solution based on the stated concentration and/or density.

Inhibitor · Natural Compounds · Compound Libraries · Recombinant Proteins

This product is for Research Use Only · Not for Human or Veterinary or Therapeutic Use

Tel:781-999-4286 E_mail:info@targetmol.com Address:34 Washington Street,Wellesley Hills,MA 02481