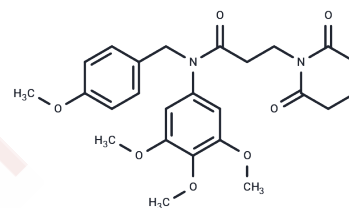


## LSD1-IN-39

## Chemical Properties

CAS No. : 3024554-34-2  
 Formula: C<sub>25</sub>H<sub>30</sub>N<sub>2</sub>O<sub>7</sub>  
 Molecular Weight: 470.515  
 Storage: Powder: -20°C for 3 years | In solvent: -80°C for 1 year  
 Actual storage temperature shall be subject to the COA.



## Biological Description

|                            |   |
|----------------------------|---|
| Description                | LSD1-IN-39 (Compound 14) is a reversible inhibitor of LSD1 with an IC <sub>50</sub> of 0.18 μM, showing broad-spectrum antiproliferative activity against cancer cells, inhibiting HepG2 cell migration, and suppressing epithelial-mesenchymal transition. Additionally, LSD1-IN-39 exhibits antitumor activity in mouse models. |
| Targets(IC <sub>50</sub> ) | Histone Demethylase   |

## Preparing Stock Solutions

|       | 1mg       | 5mg        | 10mg       |
|-------|-----------|------------|------------|
| 1 mM  | 2.1253 mL | 10.6265 mL | 21.2531 mL |
| 5 mM  | 0.4251 mL | 2.1253 mL  | 4.2506 mL  |
| 10 mM | 0.2125 mL | 1.0627 mL  | 2.1253 mL  |
| 50 mM | 0.0425 mL | 0.2125 mL  | 0.4251 mL  |

Please select the appropriate solvent to prepare the stock solution, according to the solubility of the product in different solvents. Please use it as soon as possible.

Note: The dilution table applies only to solid products. For liquid products, please calculate the stock solution based on the stated concentration and/or density.

Inhibitor · Natural Compounds · Compound Libraries · Recombinant Proteins

This product is for Research Use Only · Not for Human or Veterinary or Therapeutic Use

Tel:781-999-4286 E\_mail:info@targetmol.com Address:34 Washington Street,Wellesley Hills,MA 02481