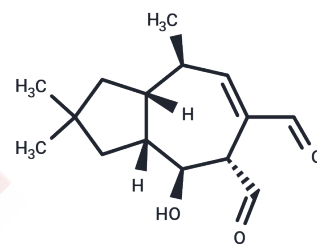


## Piperdial

## Chemical Properties

CAS No. :	100288-36-6
Formula:	C <sub>15</sub> H <sub>22</sub> O <sub>3</sub>
Molecular Weight:	250.333
Storage:	Powder: -20°C for 3 years   In solvent: -80°C for 1 year <i>Actual storage temperature shall be subject to the COA.</i>



## Biological Description

Description	Piperdial is a naturally occurring compound found in <i>Lactifluus piperatus</i> and <i>Lactarius torminosus</i> . It is a co-aggregated form of epinephrine.
-------------	---

## Preparing Stock Solutions

	1mg	5mg	10mg
1 mM	3.9947 mL	19.9736 mL	39.9473 mL
5 mM	0.7989 mL	3.9947 mL	7.9895 mL
10 mM	0.3995 mL	1.9974 mL	3.9947 mL
50 mM	0.0799 mL	0.3995 mL	0.7989 mL

Please select the appropriate solvent to prepare the stock solution, according to the solubility of the product in different solvents. Please use it as soon as possible.

Note: The dilution table applies only to solid products. For liquid products, please calculate the stock solution based on the stated concentration and/or density.

**Inhibitor · Natural Compounds · Compound Libraries · Recombinant Proteins**

This product is for Research Use Only · Not for Human or Veterinary or Therapeutic Use

Tel:781-999-4286 E\_mail:info@targetmol.com Address:34 Washington Street,Wellesley Hills,MA 02481