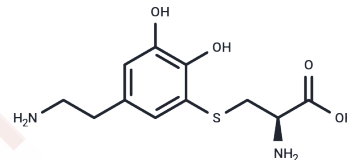


5-S-Cysteinyldopamine

Chemical Properties

CAS No. :	99558-89-1
Formula:	C ₁₁ H ₁₆ N ₂ O ₄ S
Molecular Weight:	272.321
Storage:	Powder: -20°C for 3 years In solvent: -80°C for 1 year Actual storage temperature shall be subject to the COA.



Biological Description

Description	5-S-Cysteinyldopamine is a thioether metabolite of dopamine that can induce neurological damage by causing extensive oxidative stress and protein aggregation. This is characterized by protein carbonylation, glutathione depletion, and increased expression of α -synuclein (α -Syn) and ERp57 proteins. It is applicable in research on neurodegenerative diseases such as Parkinson's disease.
Targets(IC50)	Others

Preparing Stock Solutions

	1mg	5mg	10mg
1 mM	3.6722 mL	18.3608 mL	36.7215 mL
5 mM	0.7344 mL	3.6722 mL	7.3443 mL
10 mM	0.3672 mL	1.8361 mL	3.6722 mL
50 mM	0.0734 mL	0.3672 mL	0.7344 mL

Please select the appropriate solvent to prepare the stock solution, according to the solubility of the product in different solvents. Please use it as soon as possible.

Note: The dilution table applies only to solid products. For liquid products, please calculate the stock solution based on the stated concentration and/or density.

Inhibitor · Natural Compounds · Compound Libraries · Recombinant Proteins

This product is for Research Use Only · Not for Human or Veterinary or Therapeutic Use

Tel: 781-999-4286 E_mail: info@targetmol.com Address: 34 Washington Street, Wellesley Hills, MA 02481