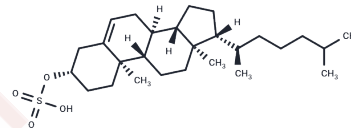


Cholesterol sulfate

Chemical Properties

CAS No. :	1256-86-6
Formula:	C ₂₇ H ₄₆ O ₄ S
Molecular Weight:	466.72
Storage:	Powder: -20°C for 3 years In solvent: -80°C for 1 year Actual storage temperature shall be subject to the COA.



Biological Description

Description	Cholesterol sulfate is a multifunctional endogenous sterol sulfate and selective DOCK2 inhibitor with an IC ₅₀ of 2 μM in mouse assays. Cholesterol sulfate plays multiple roles including in epidermal barrier formation by regulating keratinocyte differentiation and corneocyte desquamation, functions as a serine-protease inhibitor, acts as a glucocorticoid receptor antagonist, and activates RORα/γ in the thymus. Cholesterol sulfate serves as a critical research tool for investigating cutaneous biology, immunomodulation, steroid metabolism, sperm capacitation, platelet aggregation, and disorders such as X-linked ichthyosis.
Targets(IC ₅₀)	Glucocorticoid Receptor,ROR,Serine Protease

Solubility Information

Solubility	DMSO: 20 mg/mL (42.85 mM),Sonication is recommended. (< 1 mg/ml refers to the product slightly soluble or insoluble)
------------	---

Preparing Stock Solutions

	1mg	5mg	10mg
1 mM	2.1426 mL	10.7131 mL	21.4261 mL
5 mM	0.4285 mL	2.1426 mL	4.2852 mL
10 mM	0.2143 mL	1.0713 mL	2.1426 mL
50 mM	0.0429 mL	0.2143 mL	0.4285 mL

Please select the appropriate solvent to prepare the stock solution, according to the solubility of the product in different solvents. Please use it as soon as possible.

Note: The dilution table applies only to solid products. For liquid products, please calculate the stock solution based on the stated concentration and/or density.

Reference

Sakurai T, et al. Cholesterol sulfate is a DOCK2 inhibitor that mediates tissue-specific immune evasion in the eye. Sci Signal. 2018 Jul 31;11(541):eaao4874.

Inhibitor · Natural Compounds · Compound Libraries · Recombinant Proteins

This product is for Research Use Only · Not for Human or Veterinary or Therapeutic Use

Tel:781-999-4286 E_mail:info@targetmol.com Address:34 Washington Street,Wellesley Hills,MA 02481