

cMCF02A

Chemical Properties

CAS No. :

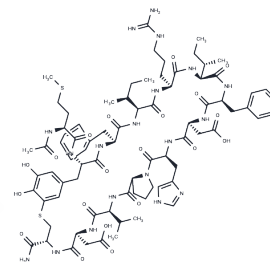
Formula: C79H111N19O20S2

Molecular Weight: 1710.97

Keep away from moisture

Storage: Powder: -20°C for 3 years | In solvent: -80°C for 1 year

Actual storage temperature shall be subject to the COA.



Biological Description

Description

cMCF02A is a potent inhibitory peptide targeting the MAGE-A4 axis, suitable for research related to melanoma.

Preparing Stock Solutions

	1mg	5mg	10mg
1 mM	0.5845 mL	2.9223 mL	5.8446 mL
5 mM	0.1169 mL	0.5845 mL	1.1689 mL
10 mM	0.0584 mL	0.2922 mL	0.5845 mL
50 mM	0.0117 mL	0.0584 mL	0.1169 mL

Please select the appropriate solvent to prepare the stock solution, according to the solubility of the product in different solvents. Please use it as soon as possible.

Note: The dilution table applies only to solid products. For liquid products, please calculate the stock solution based on the stated concentration and/or density.

Inhibitor · Natural Compounds · Compound Libraries · Recombinant Proteins

This product is for Research Use Only · Not for Human or Veterinary or Therapeutic Use

Tel:781-999-4286

E_mail:info@targetmol.com

Address:34 Washington Street,Wellesley Hills,MA 02481