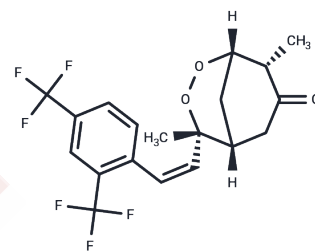


## Arteflene

## Chemical Properties

|                   |   |
|-------------------|---|
| CAS No. :         | 123407-36-3   |
| Formula:          | C <sub>19</sub> H <sub>18</sub> F <sub>6</sub> O <sub>3</sub>   |
| Molecular Weight: | 408.335   |
| Storage:          | Powder: -20°C for 3 years   In solvent: -80°C for 1 year<br>Actual storage temperature shall be subject to the COA. |



## Biological Description

|               |  |
|---------------|--|
| Description   | Arteflene is a synthetic structural analogue derived from artemisinin, exhibiting antimalarial activity. |
| Targets(IC50) | Parasite   |

## Preparing Stock Solutions

|       | 1mg       | 5mg        | 10mg       |
|-------|-----------|------------|------------|
| 1 mM  | 2.4489 mL | 12.2447 mL | 24.4894 mL |
| 5 mM  | 0.4898 mL | 2.4489 mL  | 4.8979 mL  |
| 10 mM | 0.2449 mL | 1.2245 mL  | 2.4489 mL  |
| 50 mM | 0.049 mL  | 0.2449 mL  | 0.4898 mL  |

Please select the appropriate solvent to prepare the stock solution, according to the solubility of the product in different solvents. Please use it as soon as possible.

Note: The dilution table applies only to solid products. For liquid products, please calculate the stock solution based on the stated concentration and/or density.

Inhibitor · Natural Compounds · Compound Libraries · Recombinant Proteins

This product is for Research Use Only · Not for Human or Veterinary or Therapeutic Use

Tel: 781-999-4286 E\_mail: info@targetmol.com Address: 34 Washington Street, Wellesley Hills, MA 02481