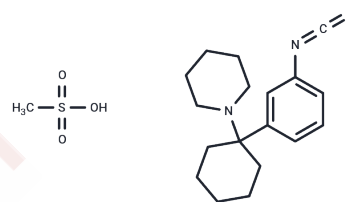


Metaphit methylsulfate

Chemical Properties

| | |
|-------------------|---|
| CAS No. : | 99287-12-4 |
| Formula: | C19H28N2O3S2 |
| Molecular Weight: | 396.567 |
| Storage: | Powder: -20°C for 3 years In solvent: -80°C for 1 year Actual storage temperature shall be subject to the COA. |



Biological Description

| | |
|---------------|---|
| Description | Metaphit methylsulfate is a specific PCP antagonist and an acylating agent for the [3H] phencyclidine binding site in rat brain homogenate. It inhibits PCP-induced motor activity through a presynaptic mechanism. |
| Targets(IC50) | iGluR |

Preparing Stock Solutions

| | 1mg | 5mg | 10mg |
|-------|-----------|------------|------------|
| 1 mM | 2.5216 mL | 12.6081 mL | 25.2162 mL |
| 5 mM | 0.5043 mL | 2.5216 mL | 5.0432 mL |
| 10 mM | 0.2522 mL | 1.2608 mL | 2.5216 mL |
| 50 mM | 0.0504 mL | 0.2522 mL | 0.5043 mL |

Please select the appropriate solvent to prepare the stock solution, according to the solubility of the product in different solvents. Please use it as soon as possible.

Note: The dilution table applies only to solid products. For liquid products, please calculate the stock solution based on the stated concentration and/or density.

Inhibitor · Natural Compounds · Compound Libraries · Recombinant Proteins

This product is for Research Use Only · Not for Human or Veterinary or Therapeutic Use

Tel: 781-999-4286 E_mail: info@targetmol.com Address: 34 Washington Street, Wellesley Hills, MA 02481